

CITY OF SAN BUENAVENTURA HISTORIC LANDMARKS, DISTRICTS, and POINTS OF INTEREST

Landmark Number: 2

Historic Name: **Ortega Adobe**

Address: **215 W. Main Street**

Designated: **February 11, 1974**

Description:

CA VEN 785H

Emigdio Miguel Ortega, grandson of Josef Francisco de Ortega, discoverer of San Francisco Bay in 1734, and comandante of Santa Barbara in 1782, was born at Mission San Diego. Emigdio was appointed Sergeant of the Santa Barbara Company in 1811-1818 and comisionado at Los Angeles in 1918. He married Concepcion Dominguez at Mission Santa Barbara. Through the land grant of 1830-1850 for Rancho Ex Mission San Buenaventura from Govenor Pio Pico, he bought the 200 x 200 foot lot and built the adobe in 1855-57. The west half of the adobe was washed away by the floods of 1862 and rebuilt using the original roof tiles from the Mission San Buenaventura. In 1897, Emilio C. Ortega, son of Emigdio and Concepcion, began and operated from the adobe, the now famous Ortega Chili Factory.

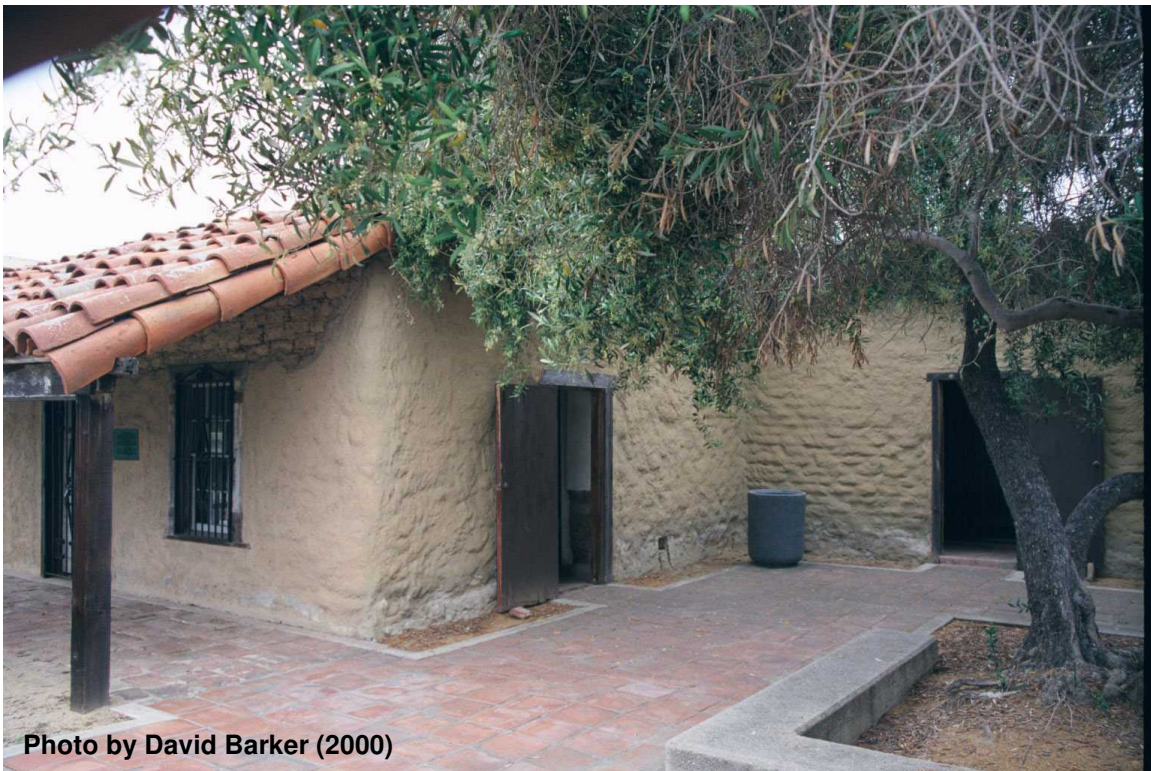


Photo by David Barker (2000)